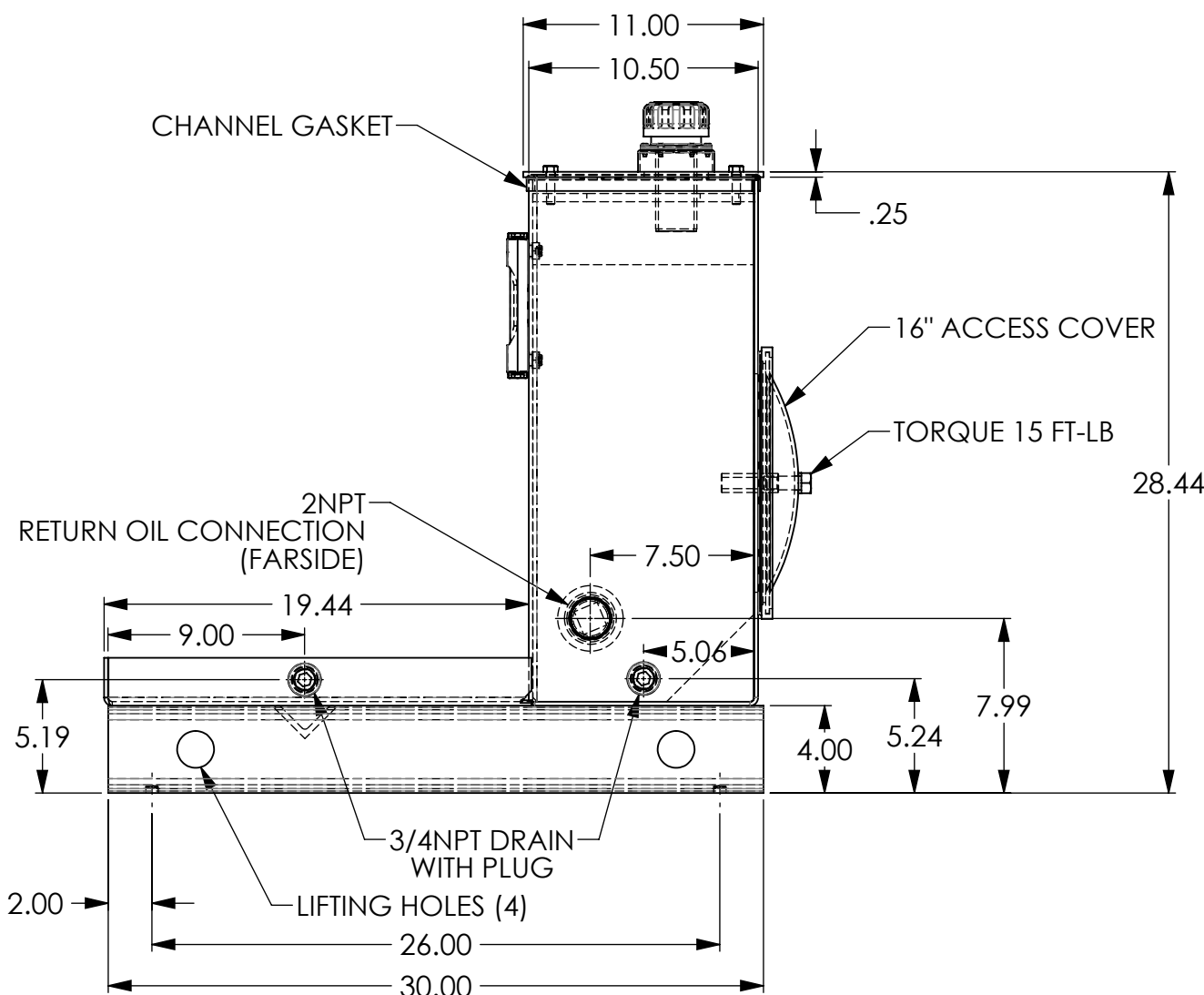
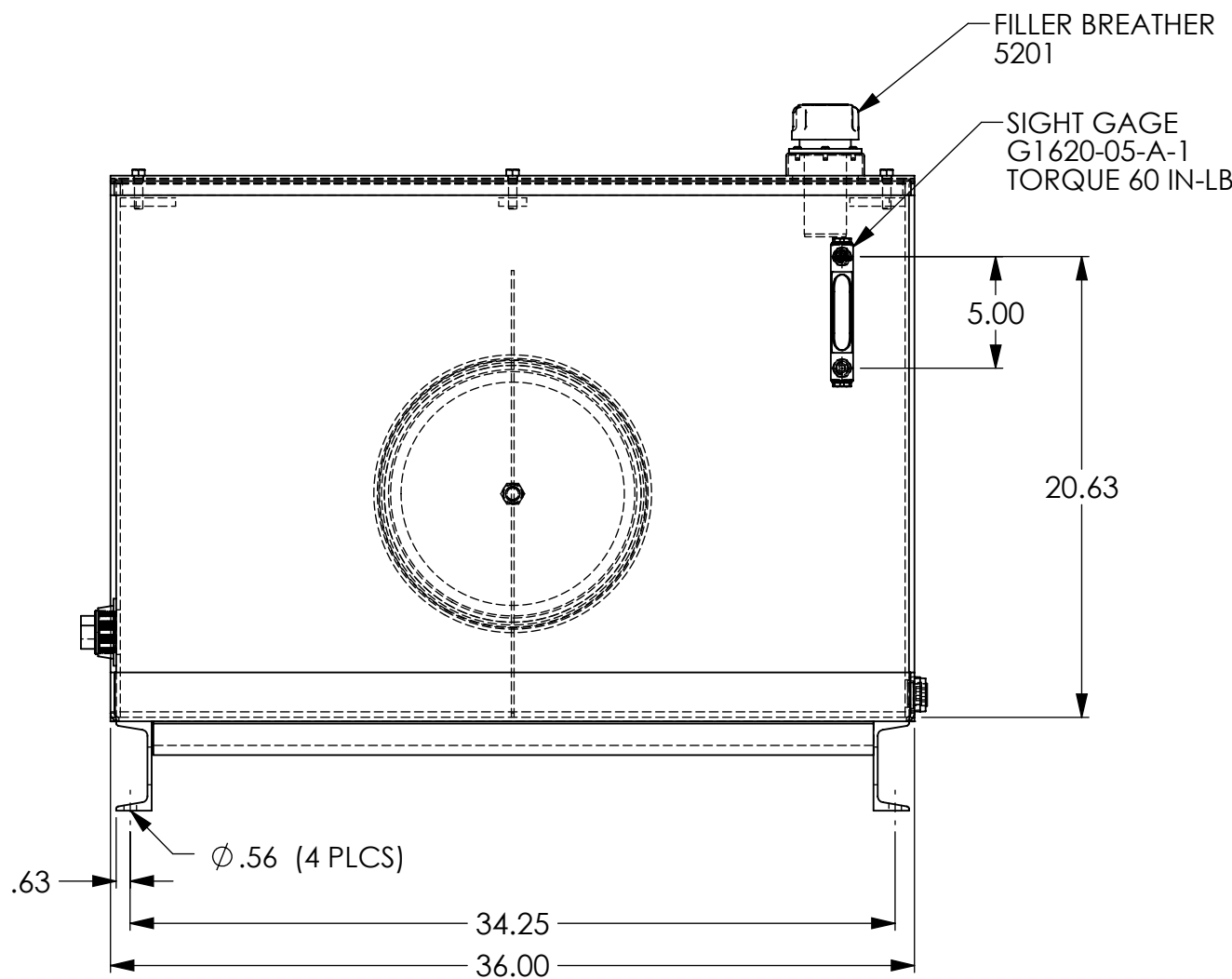


SCALE 1 : 12

- NOTES:
- 1. THIS RESERVOIR IS DESIGNED FOR STATIONARY INSTALLATIONS, ANY MOBILE INSTALLATIONS ARE SUBJECT TO FACTORY REVIEW
 - 2. DO NOT SHIP THIS UNIT FULL OF OIL
 - 3. THIS RESERVOIR IS THOROUGHLY CLEANED, A RUST INHIBITOR APPLIED TO THE INTERIOR, AND PRIME PAINTED GRAY PRIOR TO SHIPMENT
 - 4. OPERATING TEMPERATURE IS 180° F MAXIMUM, FOR HIGHER TEMPERATURES CONSULT FACTORY
 - 5. ALL PORTS ARE PLASTIC PLUGGED AND PROTECTED FOR SHIPPING
 - 6. SHIPPED LOOSE: SIGHT GAGE (ALUMINUM)
FILLER BREATHER (STEEL WITH ZINC TRIVALENT CHROME FINISH)
 - 7. ALL SEALS ARE BUNA N



ALL DIMENSIONS FOR REFERENCE ONLY
UNLESS OTHERWISE SPECIFIED ALL DIMENSIONS ARE IN INCHES

LDI Industries

MANITOWOC, WI HUNTLEY, IL

MATERIAL STEEL

FINISH SEE BOM & NOTES

CUST NO -

NAME	DATE
DRAWN BY -	-
CHECKED BY AJO	10/19/2022
REVISED BY -	-

THIS DOCUMENT CONTAINS INFORMATION PROPRIETARY TO LDI INDUSTRIES, INC. AND IS FURNISHED UPON THE EXPRESS CONDITION THAT THE INFORMATION CONTAINED HEREIN WILL NOT BE DISCLOSED TO ANY THIRD PARTY OR USED DIRECTLY OR INDIRECTLY IN ANY WAY DETRIMENTAL TO THE INTEREST OF LDI INDUSTRIES, INC.

TITLE:
RES_STYLE_D_30GAL_STL_PRM

ECN NO -
SIZE DWG. NO.
C V30VLDBNSC_REF

REV
A

DO NOT SCALE DRAWING SCALE: 1:8 WT(LB): 64.55 SHT 1 OF 1